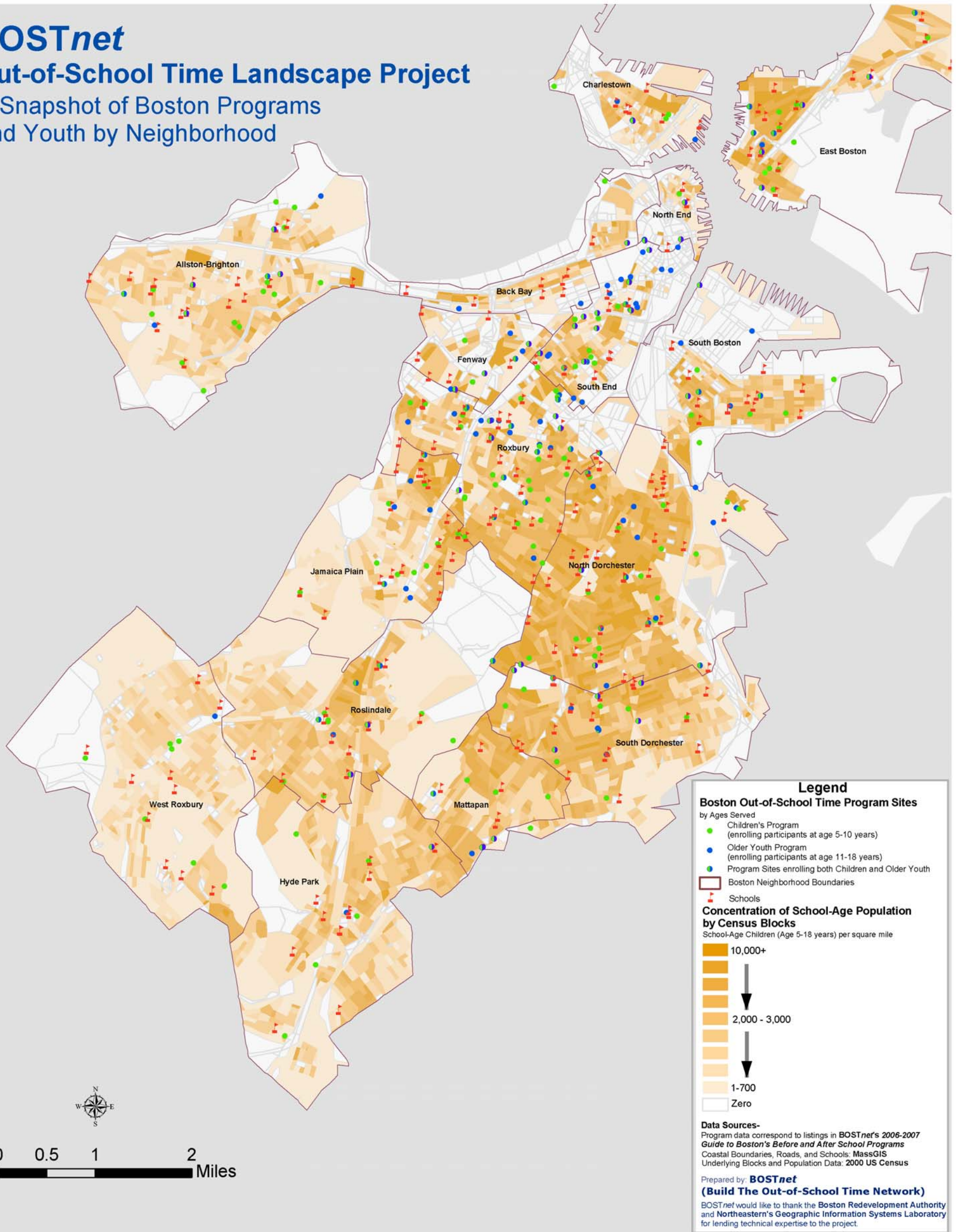


# BOSTnet

## Out-of-School Time Landscape Project

### A Snapshot of Boston Programs and Youth by Neighborhood



#### Mapping Boston's Out-of-School Time Programs

BOSTnet maps data on Out-of-School Time programs to provide a picture of the field. Dots on the map represent 271 sites, some of which host multiple programs. These sites may have programs serving younger children (green), older youth (blue), or both age groups (green and blue). Program data may be compared with the population of children and youth to begin exploring service gaps in the Out-of-School Time field.

#### Where Do Boston's Children and Older Youth Live?

The areas on the map with the darkest shading have the highest concentration of children and youth. For example, the corridor between Roxbury and Mattapan is characterized by a high density of the school-aged population, suggesting a higher demand for programs.

#### Where are the Out-of-School Time Programs?

BOSTnet's 2006-2007 Guide to Before and After School Programs references over 440 programs and resource programs for children and youth. The distribution of 366 programs and resources throughout Boston neighborhoods is shown in the adjacent table.

Please visit us on the web at [www.bostnet.org](http://www.bostnet.org) or contact us at [info@bostnet.org](mailto:info@bostnet.org) for more information on our data and maps.

#### Programs by Neighborhood

Allston/Brighton	21
Charlestown	8
Chinatown	12
Dorchester	65
East Boston	20
Fenway/Symphony	4
Hyde Park	8
Jamaica Plain	18
Mattapan	11
North End	1
Roslindale	12
Roxbury	48
South Boston	10
South End	16
West Roxbury	9
Citywide (programs)	75
Citywide (resources)	28



"working for 19 years to build a rich network of out-of-school time opportunities that challenge, reward, and inspire children and youth"

© 2006 BOSTnet